



Hard Chess Puzzle # 0117

By

G Bud Games
<https://gbud.in>

January 26, 2022

Contents

Hard Chess puzzle # 0117 - Mate in 3 moves	3
Hard chess puzzle 0117	3
Solution to hard chess puzzle 0117	4
Solution 1	4
Right moves for the solution to the hard chess puzzle 0117	7
Explanation for the moves	7
Categories of hard chess puzzle 0117	8
hard chess puzzle 0117 chart	9
How to view the solution to hard chess puzzle 0117	11
How to get help for moves in the hard chess puzzle 0117	12
Play chess for free	13

List of Figures

1	Solve this hard chess puzzle 0117. Mate in 3 moves @ https://gbud.in/gxv6ym3	3
2	Solve this hard chess puzzle online with solution @ https://gbud.in/gxv6ym3	3
3	Initial board position of hard chess puzzle 0117	4
4	Nb7+	5
5	Ke8	5
6	Rd8+	6
7	Rxd8	6
8	Rxd8#	7
9	hard chess puzzle 117 chart 1	9
10	hard chess puzzle 117 chart 2	10
11	hard chess puzzle 117 chart 3	10
12	hard chess puzzle 117 chart 4	11
13	Click the solution button to view solutions @ https://gbud.in/gxv6ym3	11
14	Click the help button to get help on next move @ https://gbud.in/gxv6ym3	12
15	Solve more hard puzzles @ https://gbud.in/chshdpz	12
16	Solve other puzzles @ https://gbud.in/chsgppz	12
17	Play chess online for free. Solve puzzles and play with friends	13
18	Solve this puzzle online by scanning this QR code or go to the link below	14

Hard Chess puzzle # 0117 - Mate in 3 moves

Solve this hard chess puzzle and improve your chess games through improvement of your chess strategies and chess tactics. This hard puzzle is a subset of [kids games](#).

Puzzle No : 0117

Difficulty level : hard

Description : Mate in 3 moves

Next Move : White

Player level : Advanced

Short URL for puzzle : <https://gbud.in/gxv6ym3>

Hard chess puzzle 0117

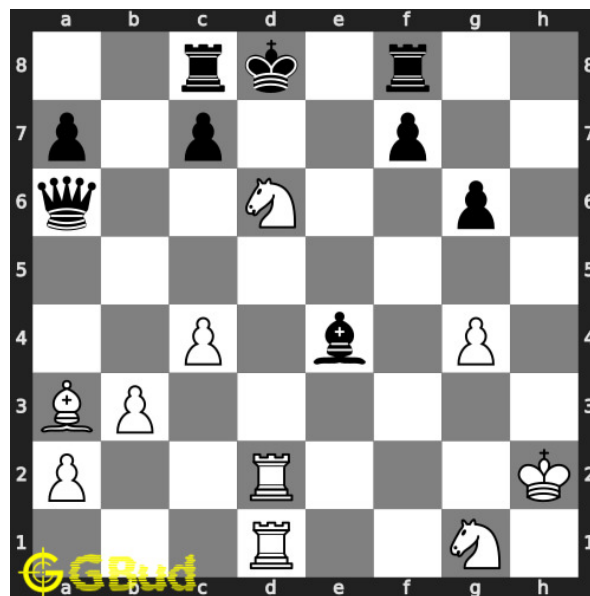


Figure 1: Solve this hard chess puzzle 0117. Mate in 3 moves @ <https://gbud.in/gxv6ym3>



Figure 2: Solve this hard chess puzzle online with solution @ <https://gbud.in/gxv6ym3>

Dont forget to check out [chess puzzles](#), [easy chess puzzles](#), [medium chess puzzles](#), [hard chess puzzles](#) and [chess puzzles collections](#) .

Solution to hard chess puzzle 0117

At this puzzle, next [move](#) is by [White](#). The objective of the puzzle is to mate in 3 moves.

See the interactive solution at the [puzzle page](#)

Solution 1

Initial board position This is the initial board position of hard chess puzzle 0117.

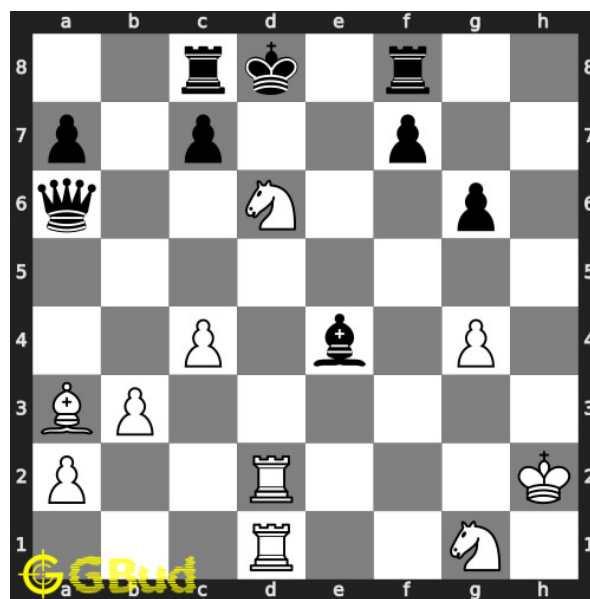


Figure 3: Initial board position of hard chess puzzle 0117

Move 1 Move by white

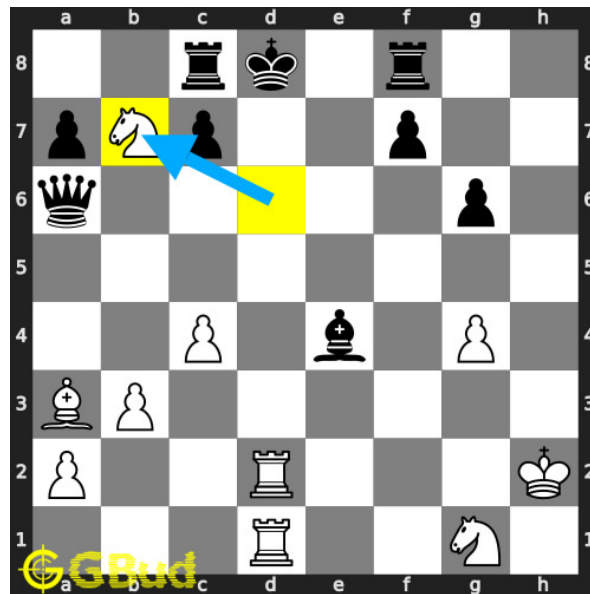


Figure 4: Nb7+

this is a discovered attack since the movement of **knight** results in **check** from the **rook**. this **move** also opens the diagonal for your **bishop**.

Move 2 Move by black

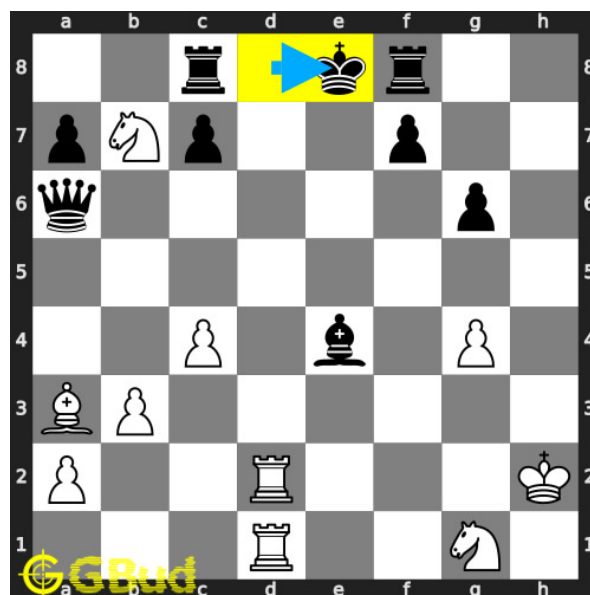


Figure 5: Ke8

opponent's **king** moves to **e8** as this is the only legal **move** available.

Move 3 Move by white

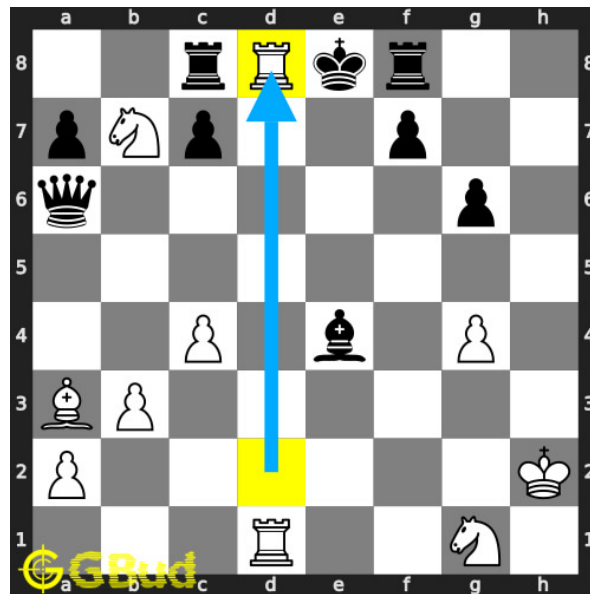


Figure 6: Rd8+

your **rook** from the **battery** formation **sacrifices** itself to attract the opponent's **rook** to d8.

Move 4 Move by black

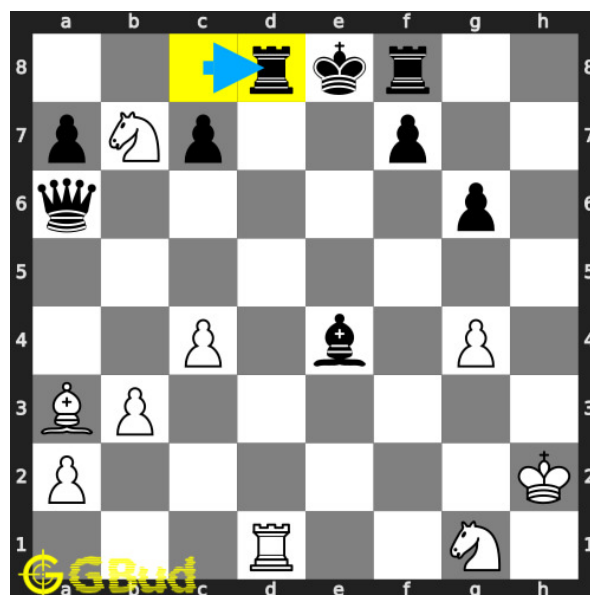


Figure 7: Rxd8

opponent's **rook** **captures** your **rook**. this is a zugzwang **move** as the opponent's **rook** is forced to respond.

Move 5 Move by white

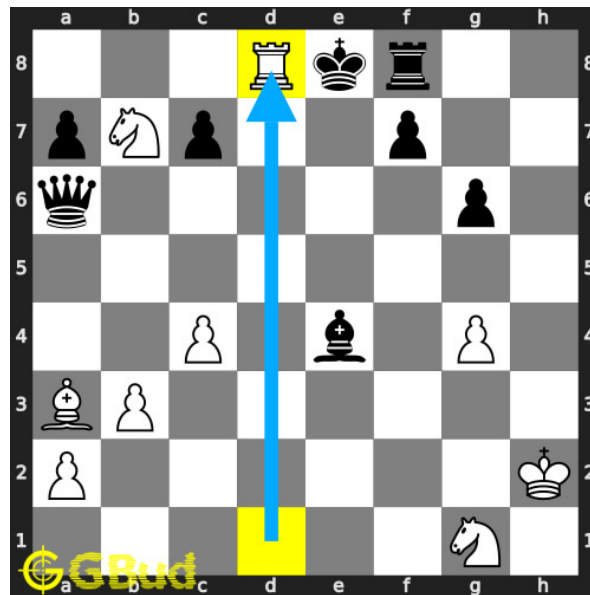


Figure 8: Rxd8#

your next **rook captures** opponent's **rook** and **checkmate**. opponent's **king** can't **capture** your **rook** since it is supported by **knight**. this is how you can **mate** in 3 **moves**.

Right moves for the solution to the hard chess puzzle 0117

Based on the objective of the puzzle, you have to make the right moves. Following are the right moves

1. Nb7+, Rd8+, Rxd8#

Explanation for the moves

1. Nb7+ - This is a discovered attack since the movement of knight results in check from the rook. This move also opens the diagonal for your bishop.
2. Ke8 - Opponent's king moves to e8 as this is the only legal move available.
3. Rd8+ - Your rook from the battery formation sacrifices itself to attract the opponent's rook to d8.
4. Rxd8 - Opponent's rook captures your rook. This is a zugzwang move as the opponent's rook is forced to respond.

5. Rxd8# - Your next rook captures opponent's rook and checkmate. Opponent's king can't capture your rook since it is supported by knight. This is how you can mate in 3 moves.
6. For right move - You have sacrificed your rook wisely. It was a good sacrifice move required for the checkmate
7. For wrong move - You could have sacrificed your rook after a discovered attack to have a checkmate. Try again

Categories of hard chess puzzle 0117

This hard chess puzzle falls in these categories.

1. [Hard chess puzzles](#)
2. [Sacrifice puzzles in chess](#)
3. [Mate in 3 puzzles in chess](#)
4. [Endgame puzzles in chess](#)
5. [Battery puzzles in chess](#)
6. [Strategy puzzles in chess](#)
7. [Zugzwang puzzles in chess](#)
8. [Rook puzzles in chess](#)
9. [Knight puzzles in chess](#)

hard chess puzzle 0117 chart



Figure 9: hard chess puzzle 117 chart 1



Figure 10: hard chess puzzle 117 chart 2



Figure 11: hard chess puzzle 117 chart 3

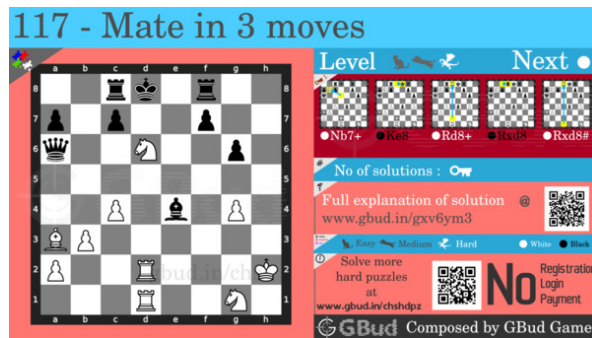


Figure 12: hard chess puzzle 117 chart 4

How to view the solution to hard chess puzzle 0117

To view the [solution to this puzzle](#), follow the steps given below

1. Go to the [puzzle page](#)
2. Click the solution button (Key as shown [below](#)) to view the solution



Figure 13: Click the solution button to view solutions @ <https://gbud.in/gxv6ym3>

How to get help for moves in the hard chess puzzle 0117

To get help or the possible next moves in the puzzle, , follow the steps given below

1. Go to the [puzzle page](#)
2. Click the help button (exclamation mark as shown [below](#)) to get help or suggestion on next possible [move](#)



Figure 14: Click the help button to get help on next move @ <https://gbud.in/gxv6ym3>



Figure 15: Solve more hard puzzles @ <https://gbud.in/chshdpz>



Figure 16: Solve other puzzles @ <https://gbud.in/chsgppz>

Play chess for free

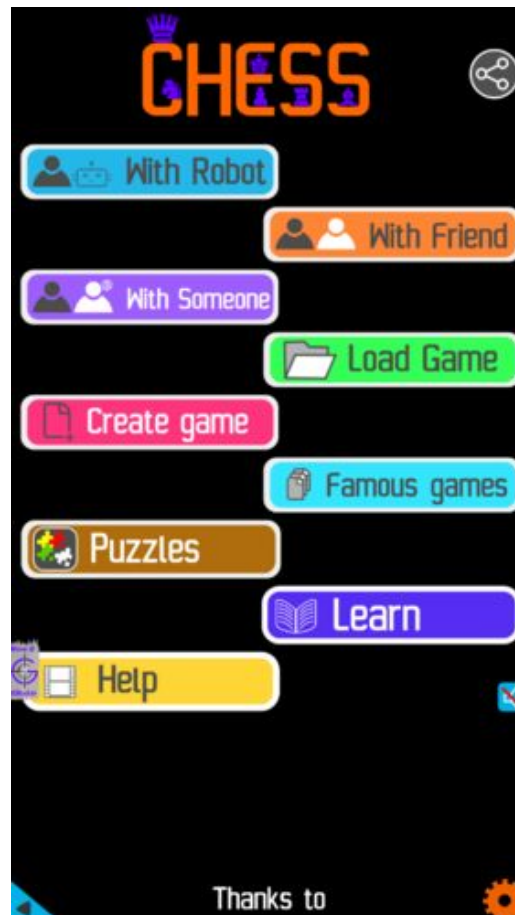


Figure 17: Play chess online for free. Solve puzzles and play with friends

Play chess for free at <https://gbud.in/chs>

We present you a platform to play chess online with friends for free. No need to install any app. You can play chess for free without registration or login.

Simple. You can do several chess related activities.

1. [solve chess puzzles](#)
2. [learn about chess](#)
3. [play chess with computer](#)
4. [play chess with friend](#)
5. [create your own chess games](#)

6. [fen viewer](#)
7. [fen editor](#)
8. [fen generator](#)
9. [pgn viewer](#)
10. [chess board editor](#)
11. [view famous chess games.](#)



Figure 18: Solve this puzzle online by scanning this QR code or go to the link below

<https://gbud.in/gxv6ym3>

Read the latest article on Hard Chess puzzle # 0117 - Mate in 3 moves by scanning this QR code or click the link

Previous article : « [Hard Chess puzzle # 0116 - Mate in 3 moves](#)

Next article : [Hard Chess puzzle # 0118 - Mate in 3 moves](#) »

[Back to top](#)

[Contact Us](#)